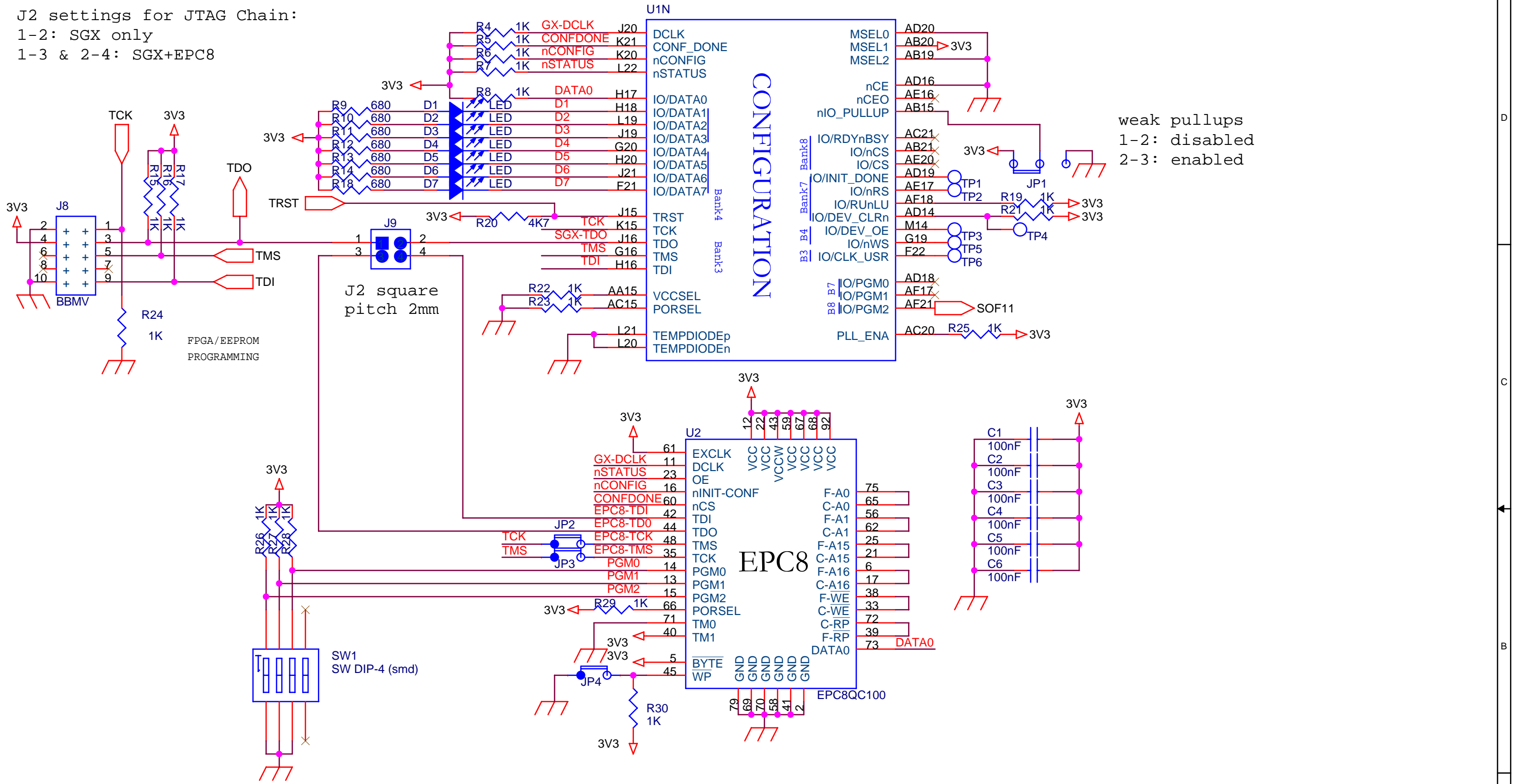


Title		
OptoRx-CLOCKnCONTROL		
Size	Document Number	Rev
A3	P.Vichoudis	1
Date:	Wednesday, December 07, 2005	Sheet 2 of 6

J2 settings for JTAG Chain:

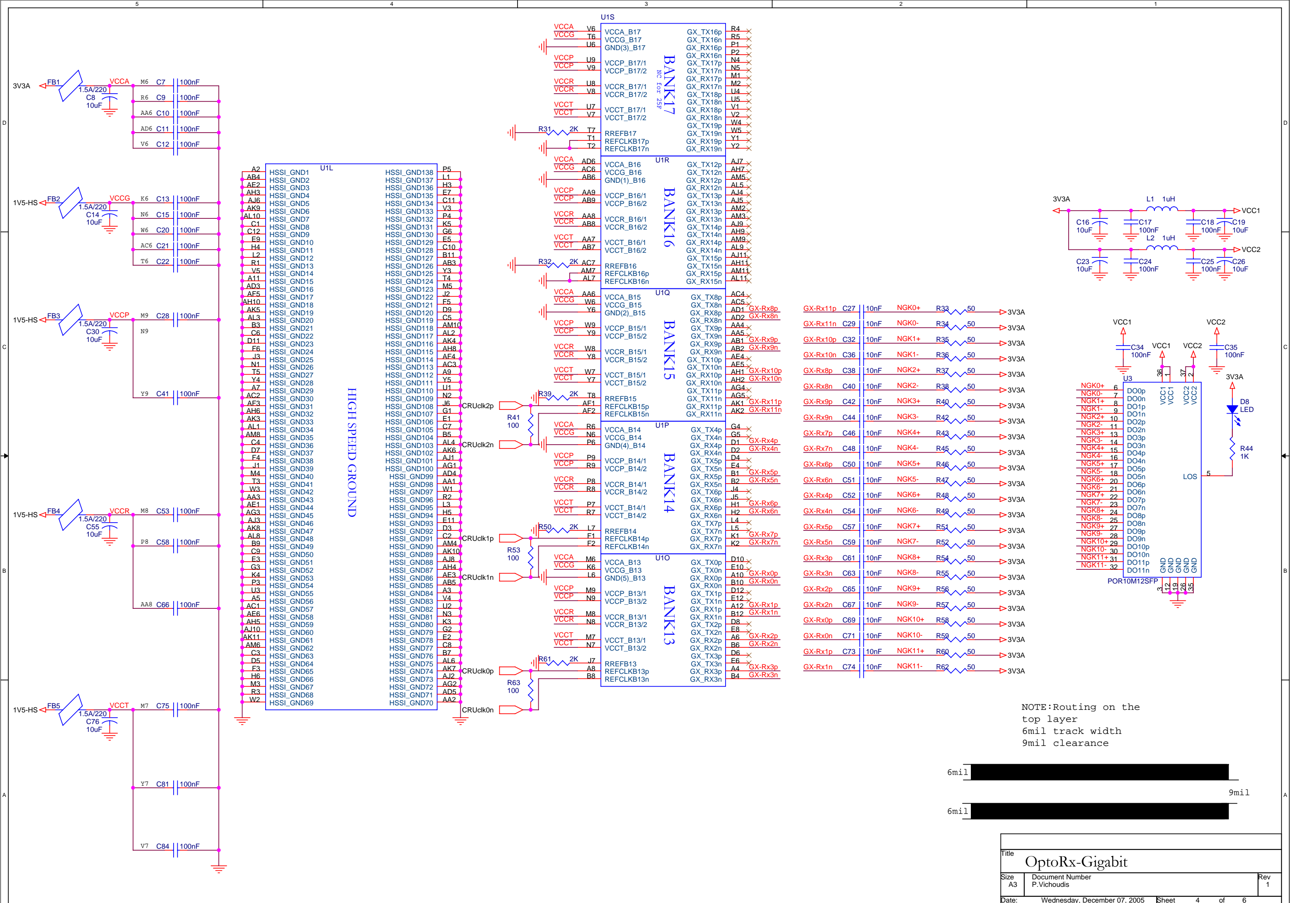
1-2: SGX only

1-3 & 2-4: SGX+EPC8



weak pullups
1-2: disabled
2-3: enabled

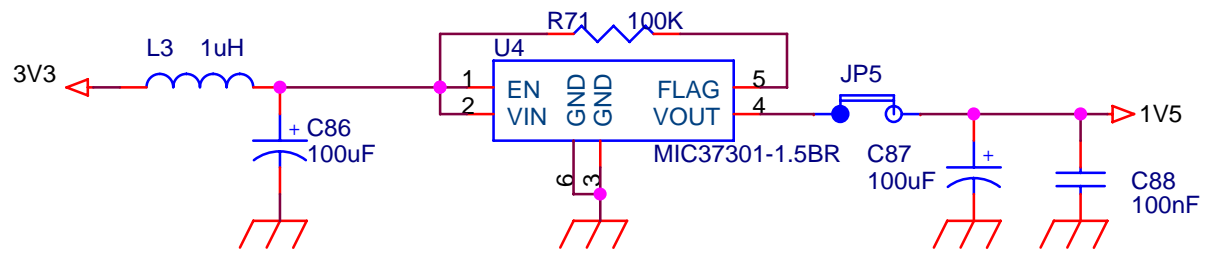
Title		
OptoRx-CONFIGURATION		
Size	Document Number	Rev
A4	P.VICHODIS	1
Date:	Tuesday, November 29, 2005	Sheet 3 of 6



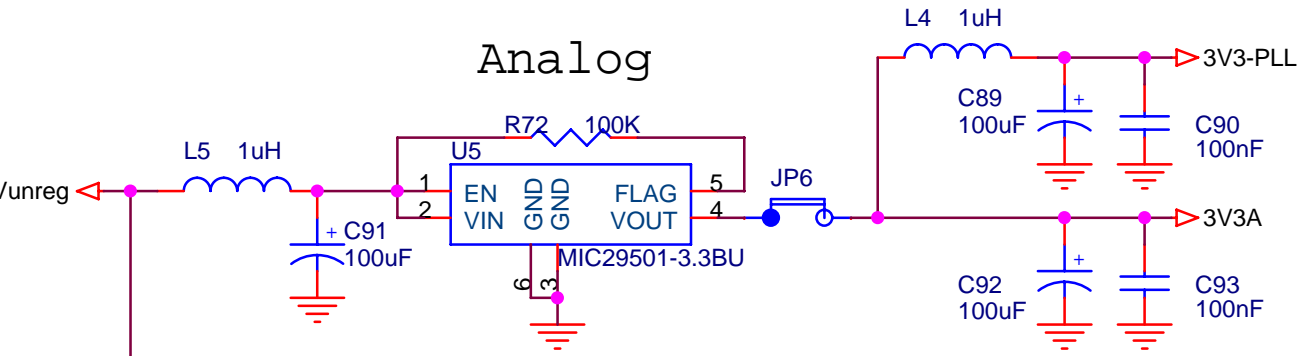
NOTE: Routing on the top layer
6mil track width
9mil clearance



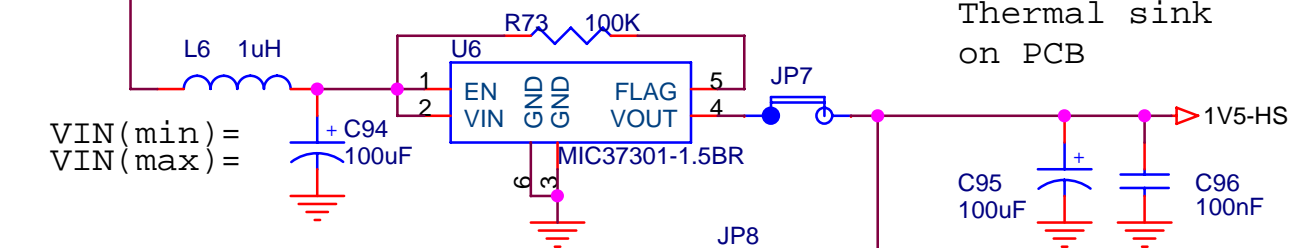
Title OptoRx-Gigabit		
Size A3	Document Number P.Vichoudis	Rev 1
Date: Wednesday, December 07, 2005	Sheet 4	of 6



Analog



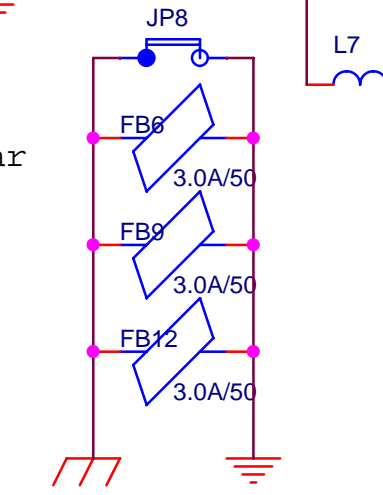
VIN(min) =
VIN(max) =



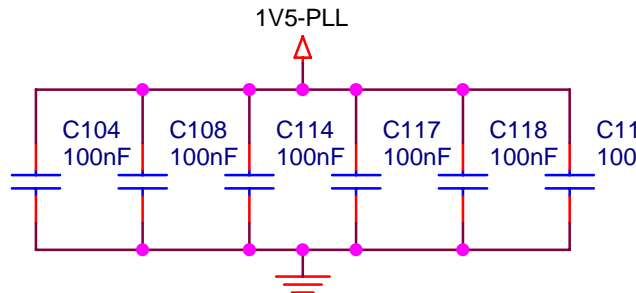
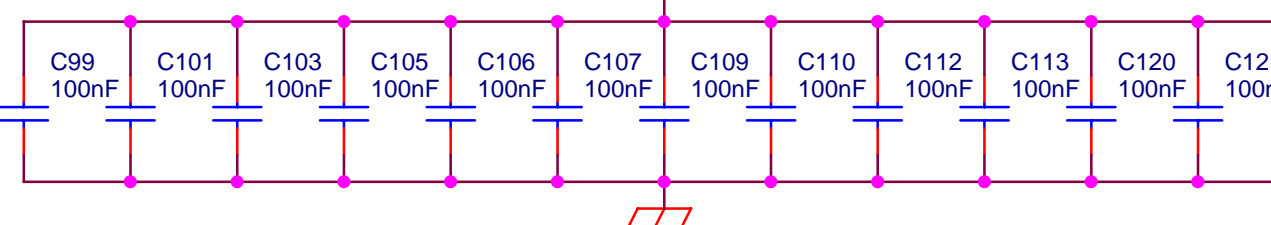
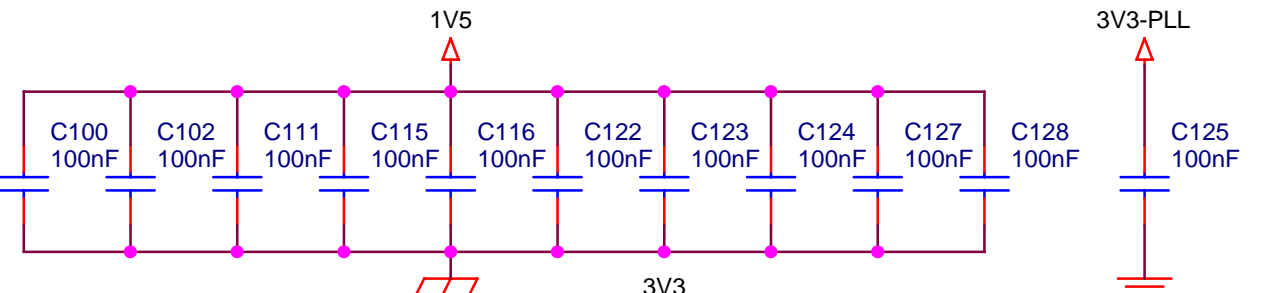
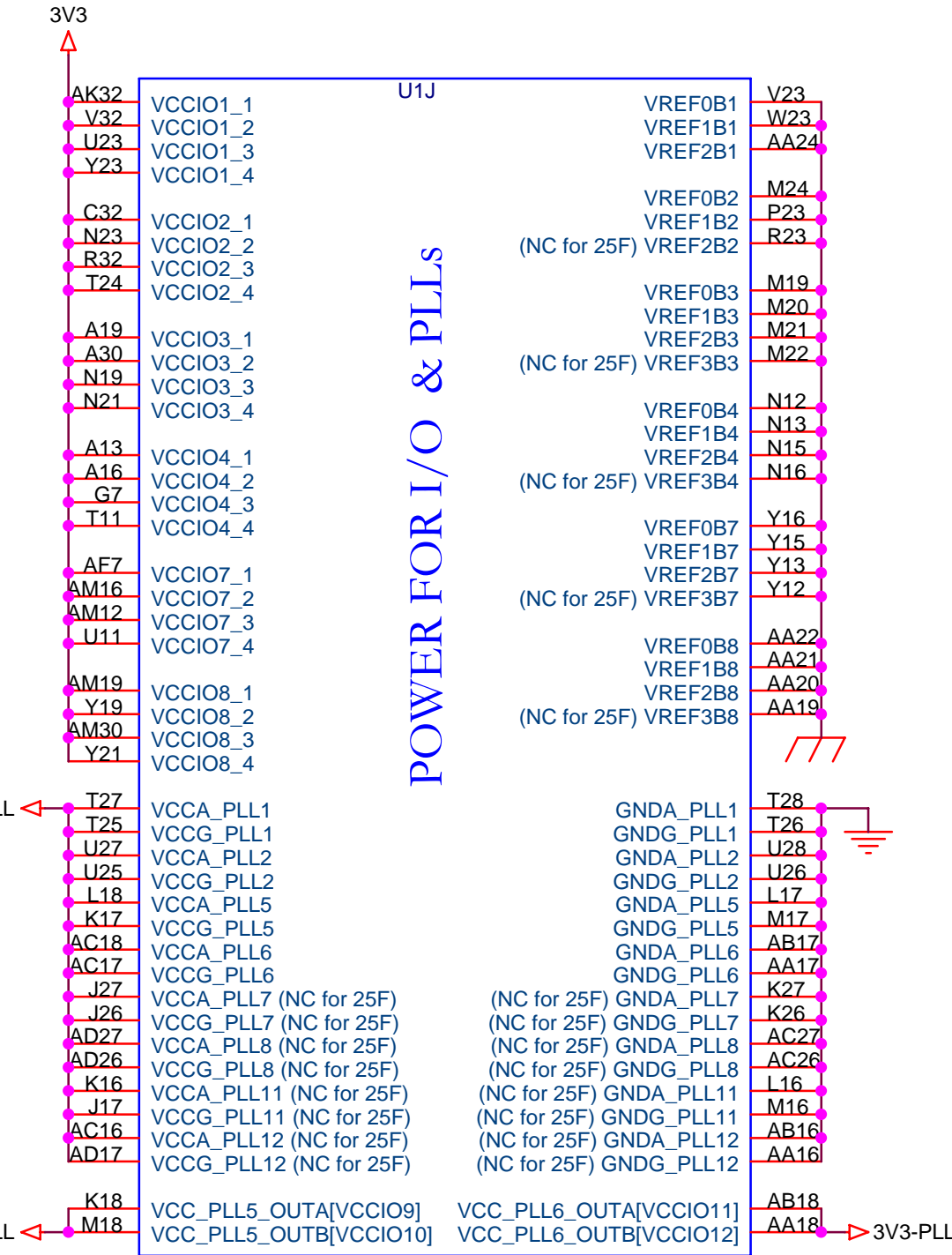
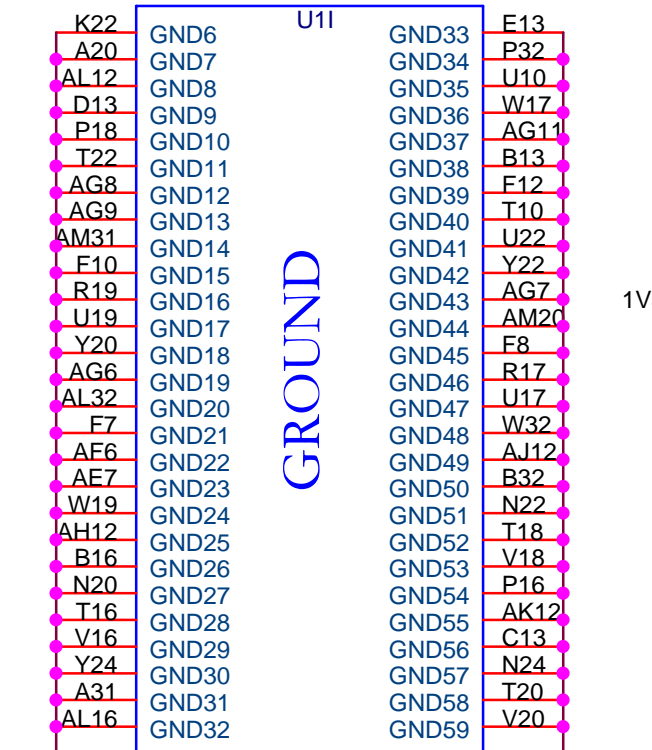
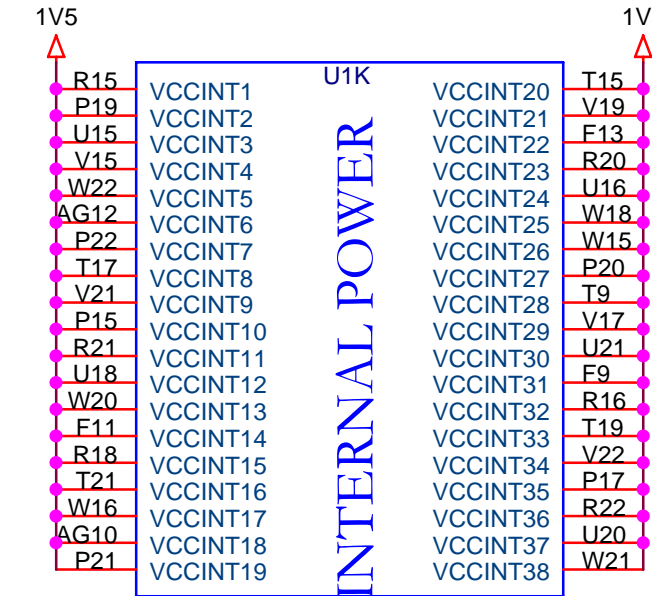
NOTE:
Thermal sink
on PCB

NOTE: Jumpers near
the Power
Connectors

NOTE:
Ferrite Bead
3.0A/50ohm
footprint 0805



Digital Hi-Speed
Ground Ground



E:\VICHOU\I\ORCAD\15.OPTORX BACK ANNOTATED\OPTORX.DSN

Title: OptoRx-Power

Size: A4 | Document Number: P.Vichoudis | Rev: 1

Date: Wednesday, December 07, 2005 | Sheet: 6 of 6